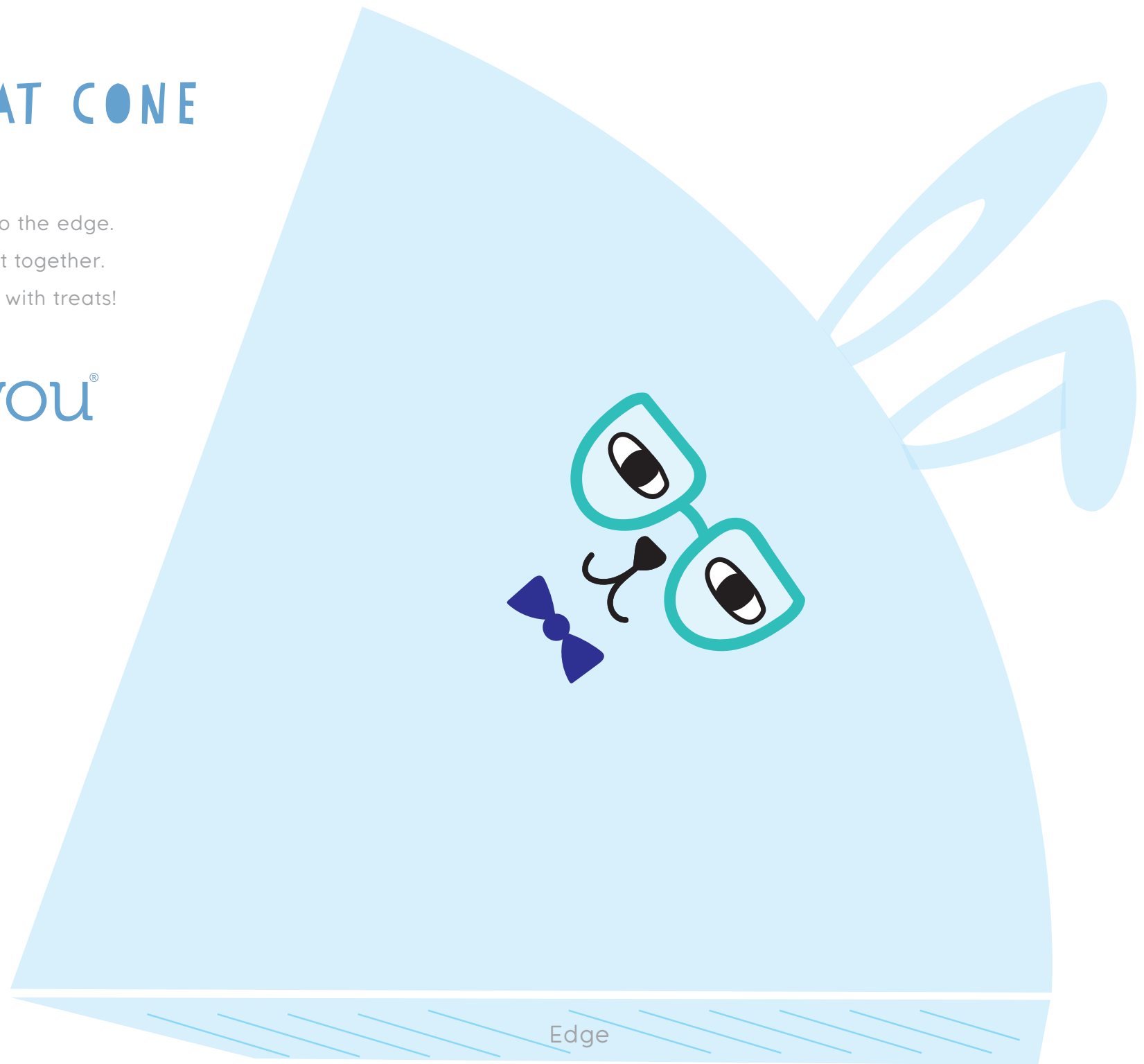


EASTER TREAT CONE

1. Cut the Bunny cone out
2. Attach double-sided tape to the edge.
3. Roll up the cone and stick it together.
4. Now you can fill your cone with treats!

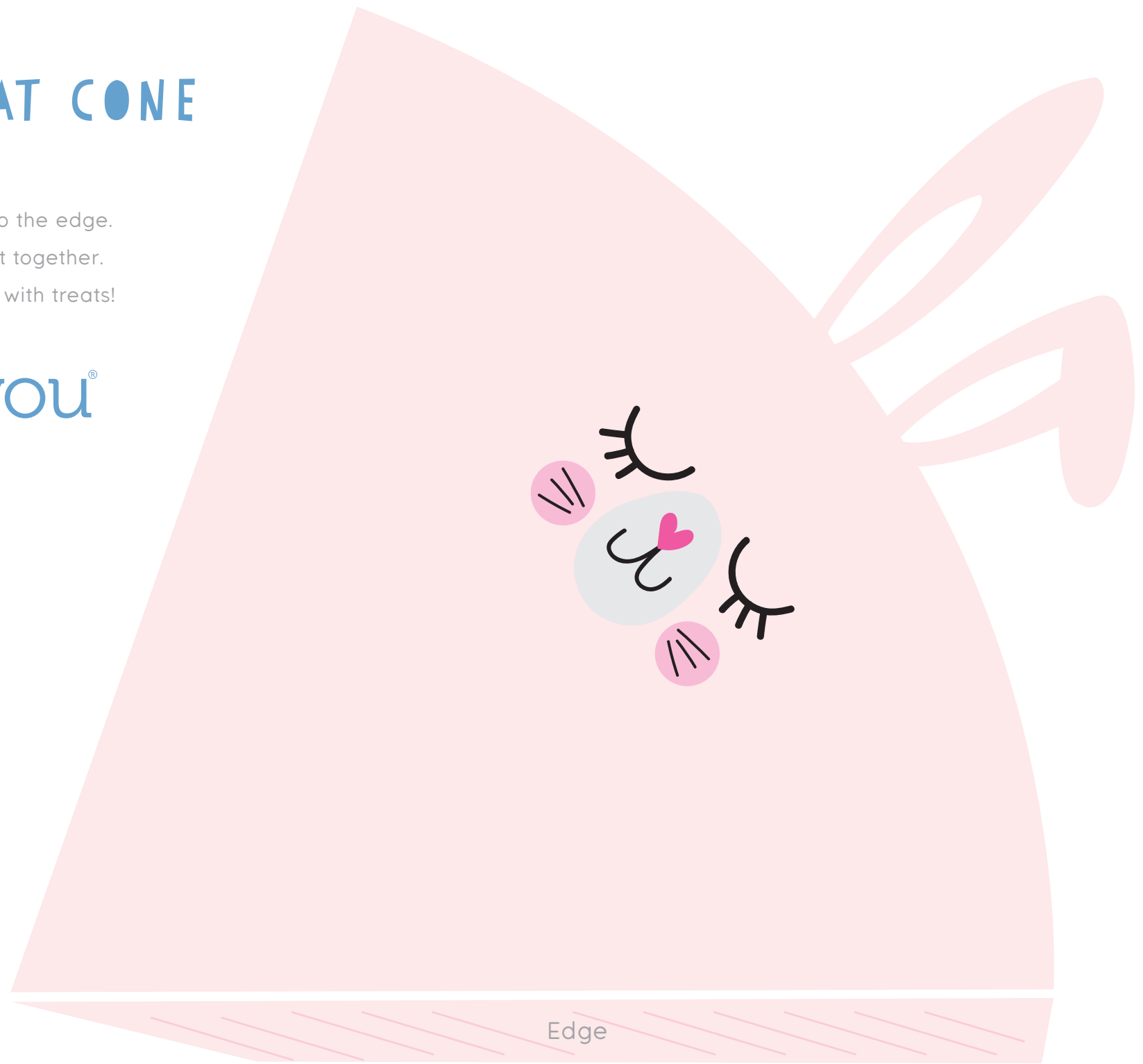
stuckonyou[®]

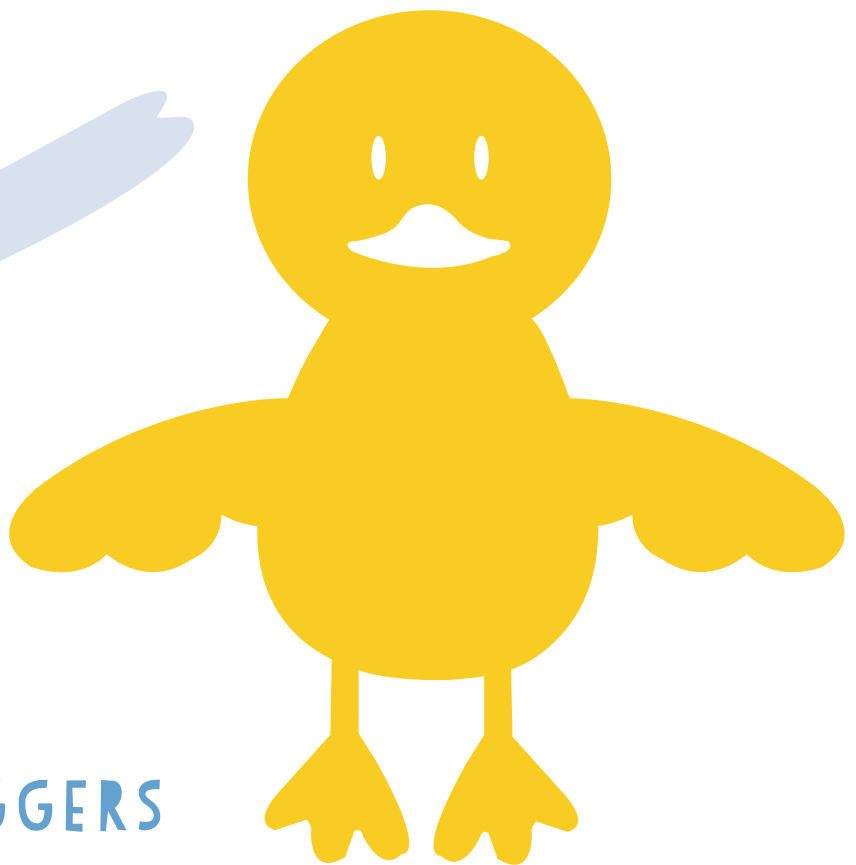


EASTER TREAT CONE

1. Cut the Bunny cone out
2. Attach double-sided tape to the edge.
3. Roll up the cone and stick it together.
4. Now you can fill your cone with treats!

stuckonyou[®]





EASTER CANDY HUGGERS

1. Cut the Animals out.
2. Place a little wrapped candy/chocolate egg on their tummy with a small piece of blu tack.
3. Fold/wrap the animals arms around the egg!

stuckonyou[®]